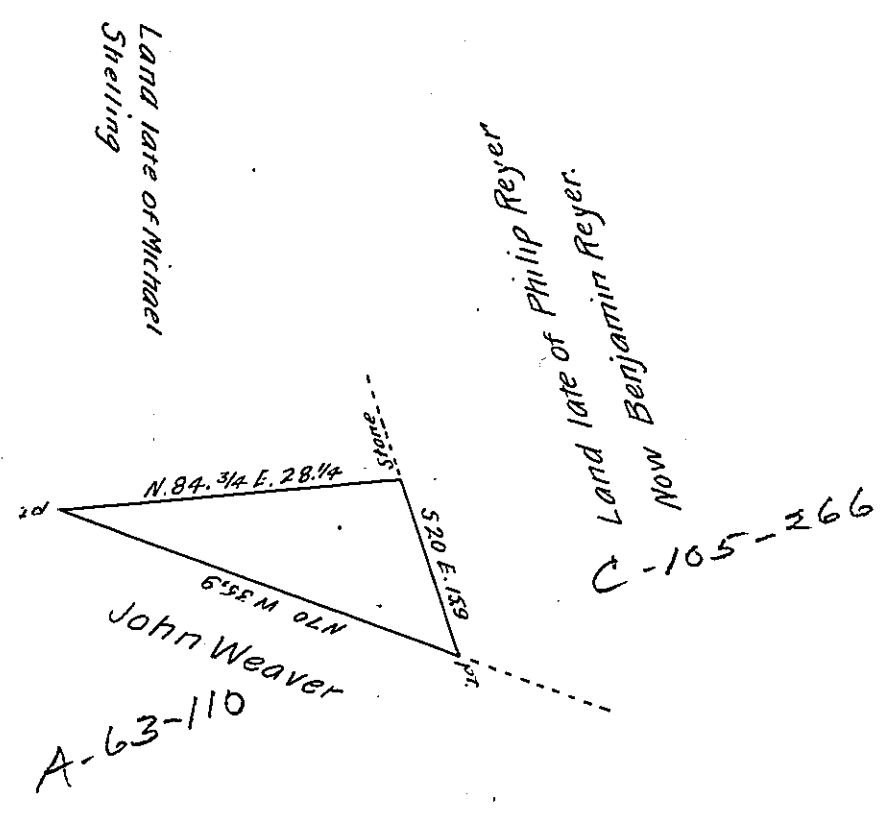


FORM No. 1.



A Draught of a peice or Tract of Land Situate in Manhheim Township
 Lancaster County Containing 1³²/₄₅ Pr and the Usual Allowance of Six Per Cent for
 Roads &c Surveyed the eight Day of April A.D. 1794 for Michael Shelling, By Virtue
 of a Warrant Dated the First Day of November A.D. 1790 -
 To Daniel Brodhead Esq^r Surveyor General -
 Henry Fearn D.S.^r

IN TESTIMONY that the above is a copy of the original remaining on file in
 the Department of Internal Affairs of Pennsylvania, made
 comformably to an Act of Assembly approved the 16th day of
 February 1833, I have hereunto set my hand and caused
 the Seal of said Department to be affixed at Harrisburg,
 this nineteenth day of December 1906

Isaac B. Brown
 Secretary of Internal Affairs.